

Snow Packet

Piano

Mrs. Hendricks

1. First day of snow do pages A and B.
2. Second missed day do pages C and D.
3. Third missed day do page E.
4. Fourth missed day do page F.
5. Fifth missed day do page G.

Turn in all pages the day we return to school to be graded.



Identify the Notes

www.musictechteacher.com

Name _____

Date _____

Fill-in-the-blanks with the correct note names

First musical staff with treble and bass clefs. Treble clef notes: G4, A4, B4, C5. Bass clef notes: G3, A3, B3, C4.

Second musical staff with treble and bass clefs. Treble clef notes: D4, E4, F4, G4. Bass clef notes: D3, E3, F3, G3.

Third musical staff with treble and bass clefs. Treble clef notes: A4, B4, C5, D5. Bass clef notes: A3, B3, C4, D4.

Fourth musical staff with treble and bass clefs. Treble clef notes: E4, F4, G4, A4. Bass clef notes: E3, F3, G3, A3.

After completing the worksheet, what did you notice about the notes in each measure?

Note Reading Worksheet

Treble Clef Exercise #1

E G B D F
Every Good Boy Does Fine

LINES: Write each note's name underneath

Two musical staves in treble clef, each containing four measures of music. Each measure contains a single note on a different line of the staff, starting from the bottom line and moving up to the top line.

F A C E

The letter names of the spaces spell out the word FACE

SPACES: Write each note's name underneath

Two musical staves in treble clef, each containing four measures of music. Each measure contains a single note in a different space of the staff, starting from the first space and moving up to the fourth space.

ALL NOTES: Write each note's name underneath. Each measure's notes spell a word.

Three musical staves in treble clef, each containing four measures of music. Each measure contains four notes, one on each line and space of the staff, starting from the bottom line and moving up to the top line.

3

Name _____

Class _____

Name Pitches I - Treble Staff

Name each pitch.



Name _____

Date _____

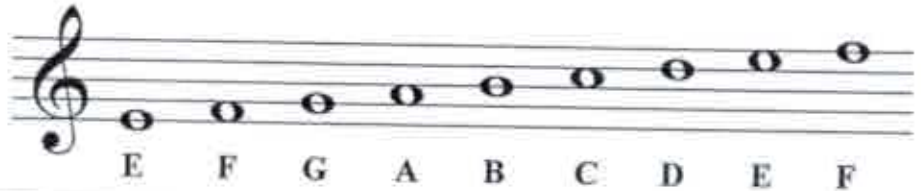


The Staff - Treble Clef

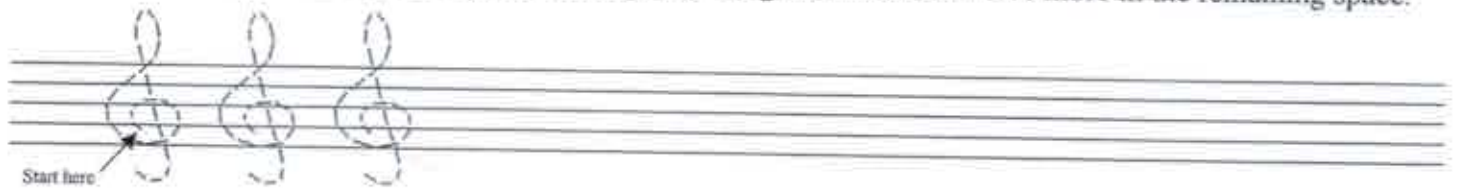
A **clef** appears at the beginning of each staff. The clef shown here is a **treble clef**.



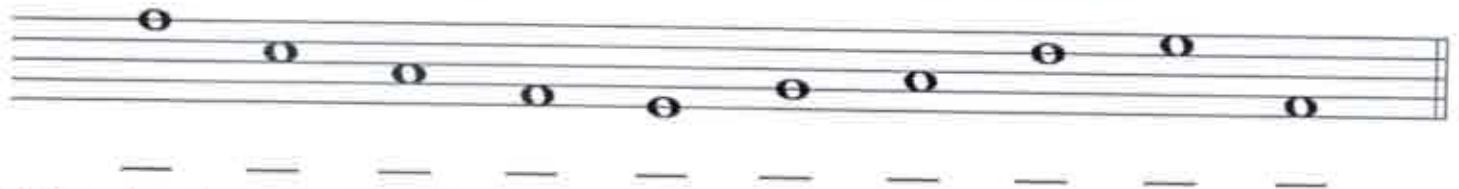
Each note on the treble clef staff has a letter name.



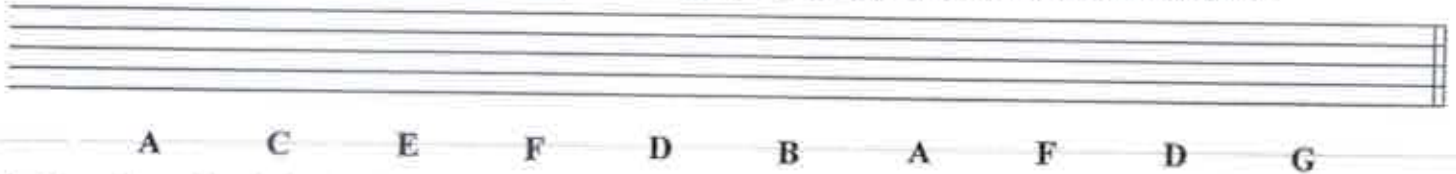
1. Practice drawing the treble clef sign by tracing over the guidelines. Draw five more in the remaining space.



2. Draw a treble clef at the beginning of the staff and write the letter name of each note.



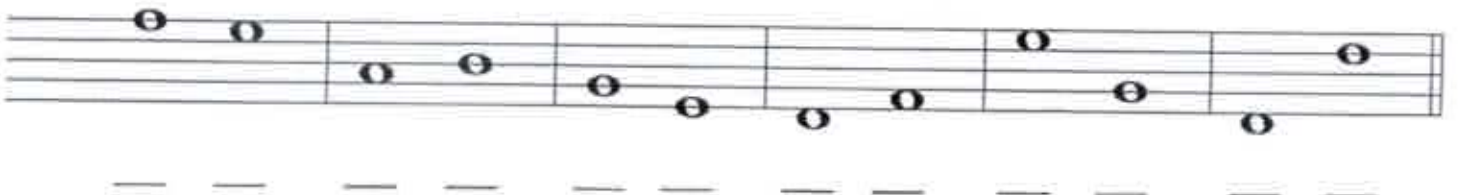
3. Draw the treble clef at the beginning of the staff and then draw the notes indicated.
If a note can be drawn in more than one place on the staff, choose which one you want to draw.



4. Draw the treble clef at the beginning of the staff.
Write the letter name for each note, then circle the higher note in each pair.



5. Draw the treble clef at the beginning of the staff.
Write the letter name for each note, then circle the lower note in each pair.



D

Note Reading Worksheet

Treble Clef Exercise #2

E G B D F
Every Good Boy Does Fine

LINES: Write each note on the correct line using quarter notes. Notes below B should have a stem on the right side facing up. Notes above B have stems facing down from the left side. The stem on the note B can face either direction

E B G D G D B F B F E G F D B E
E G B G G B D B E B G F E F D B

F A C E
The letter names of the spaces spell out the word FACE

SPACES: Write each note in the space. Use quarter notes again. Make sure the stems are correct.

F E C E A C A E C A F A F A C F
A C A C F E F E E C A F E A C A

ALL NOTES: Write each note on the line or space. This time write half notes.

B E A D A G E C A G E B A D
B E G A C E B E D D A D
F E E D C A B B A G E D E A D B A G G A G E


Name _____

Date _____



Musical Words - Treble Clef I

Each group of notes spells a word.
Write the word that each group spells.

Example 
B E D

1 
_ _ _

2 
_ _ _

3 
_ _ _

4 
_ _ _

5 
_ _ _

6 
_ _ _

7 
_ _ _

8 
_ _ _

9 
_ _ _

10 
_ _ _

11 
_ _ _

12 
_ _ _

13 
_ _ _

14 
_ _ _

15 
_ _ _

16 
_ _ _

17 
_ _ _





18 
_ _ _

Name _____

Class _____

Spell Words with Treble Pitches

Write the words that the pitches spell.





1  2  3  4 

5  6  7  8 

9  10  11  12 

13  14  15  16 

17  18  19  20 

21  22  23  24 

25  26  27  28 

F

A MUSICAL STORY

Complete the story by filling in the note names underneath each measure.

I went on a fun trip with my friend. We packed our



and climbed into a



. Along the way we stopped at a



to our . We had an



our



. We had an



and



and



. Ugh! The food was really



. We felt like we should



in



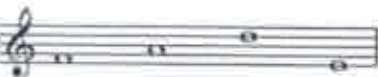
so I my friend to cut the



my friend to cut the



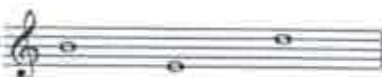
and return home. I feared that I would



and felt like an animal in a



. Suddenly I awoke and found myself at home in



. It had only been a



dream.

Name _____

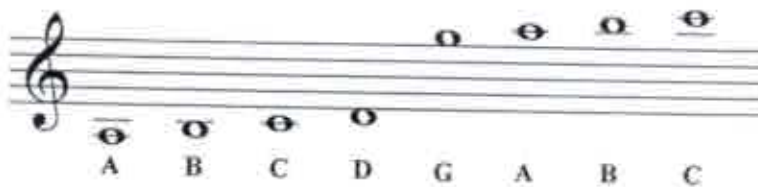
Date _____



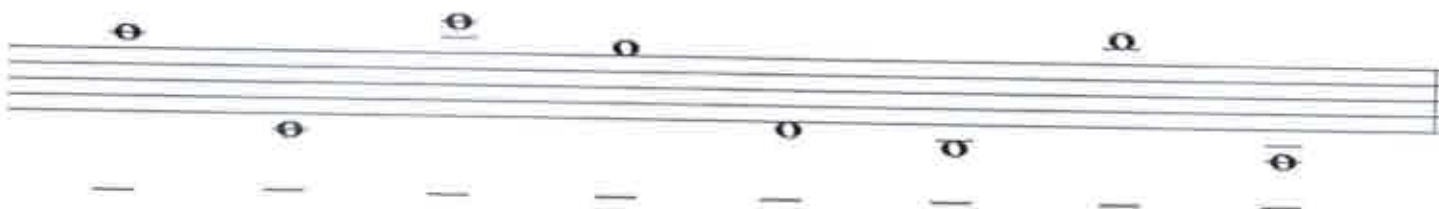
Treble Clef - Ledger Lines

Ledger lines can be used to extend the upper and lower ranges of a staff.

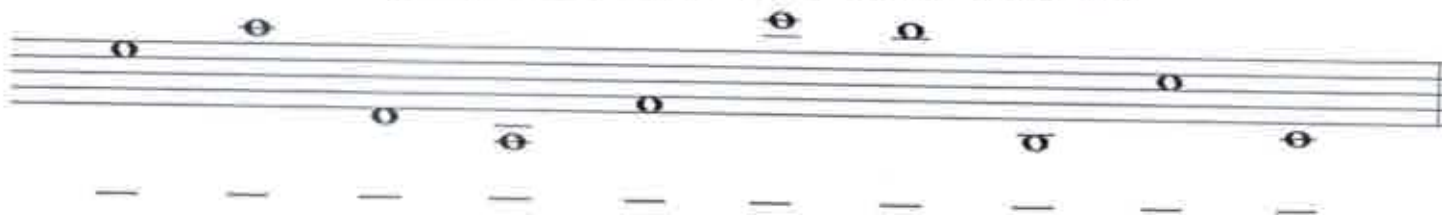
This example includes notes which can be written above and below the treble clef using **ledger lines**.



1. Draw a treble clef at the beginning of the staff and write the letter name of each note.

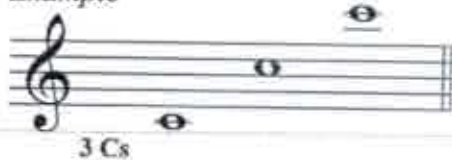


2. Draw a treble clef at the beginning of the staff and write the letter name of each note.



3. Draw the indicated notes. Use ledger lines to draw the specified number of pitches without duplication.

Example



Finale® Worksheets, Copyright © 2009 by MakeMusic, Inc.

MakeMusic grants permission to duplicate this worksheet for non-profit, educational use only, provided each copy includes this copyright notice. Copies may not be sold or included in any materials offered for sale to the general public.

Name _____

Date _____



Musical Words - Treble Clef II

Each group of notes spells a word.
Write the word that each group spells:

Example 
B E A D

1 

2 

3 

4 

5 

6 

7 

8 

9 

10 

11 

12 

13 

14 

15 

16 

17 

18 