

Viruses / Bacteria Worksheet

1. What is this structure?

2. Identify parts A-F

A.

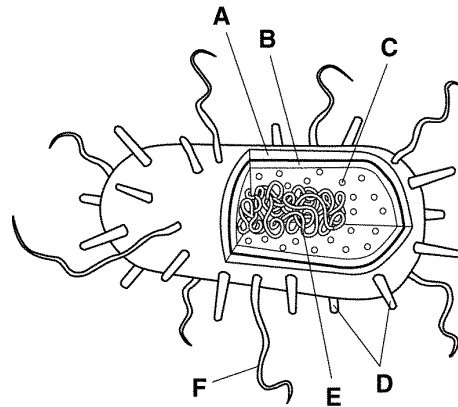
B.

C.

D.

E.

F.



3. Name the two kingdoms of bacteria. List one way these groups differ from each other.

4. Describe two roles bacteria have in the environment.

5. What are three foods that have been made using bacteria?

6. Following a flood, people are often advised to boil their drinking water. Explain why this is necessary.

7. Describe two ways of killing bacteria.

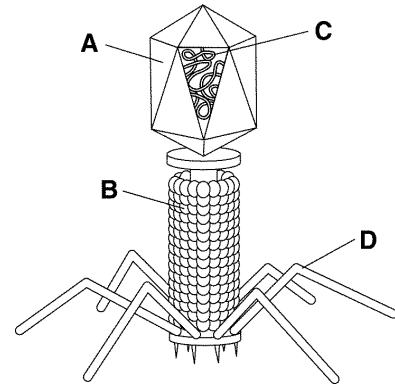
8. How are bacteria classified?

9. What are the three main shapes of bacteria?

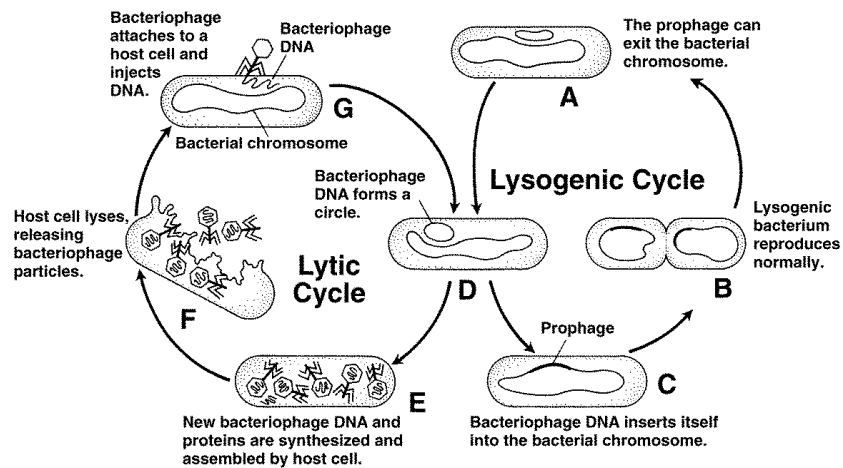
10. What is this structure to your right?

11. What type of organism does this virus infect?

12. Label parts A-D



Virus life cycle A – G



13. Which letter indicates the host cell being lysed (destroyed)?

14. Which letter above represents the stage at which a host cell begins producing new bacteriophages?

15. Which letter indicates the stage at which the bacteriophage injects its DNA into the host cell?

16. Looking at the above diagram which viral life cycle (lysogenic or lytic) is actively using and then lysing (*destroying*) body cells to make more viruses?